



## Introducing SEA LIFE centre Children's Activity Packs

Great news, you're visiting a SEA LIFE centre and we'll do everything possible to make sure you have a wonderful day out. Whether you are a Scout, Girl Guide, Youth Group or Family Group, this fun, educational Children's Activity Pack will add an extra dimension to your visit and help you make more of your day at SEA LIFE.

There are fun things to do before your visit and as well as on the day, plus the chance to win exciting prizes in our free competition when you get back home. So, why not get everyone started right now with our pre-visit puzzles and quizzes?

Because children always like to be a little independent, Activity Packs are geared to three age groups – 6 to 8, 9 to 11 and 12 to 14 years. Find out what's in each and how to make the most of it on the following pages.

And check out these helpful hints:

- Bring clipboards, pens and pencils to keep things nice and easy.
- Encourage everyone to interact with each other and the SEA LIFE team – they'll discover more and have more fun.
- Don't forget there is a full programme of informal FREE talks throughout the day at every SEA LIFE centre.



## **SEA LIFE centre Group Activity Park – 6 to 8 years**

### **Before your Visit – isn't it great looking forward to things**

Children love Word Search and Spot the Difference puzzles and although they may need some help with these, let them have a go first and see how far they get. This will give you the opportunity to encourage and praise.

To draw "What Will You See?" we suggest that you give the children free rein to use their imagination. But if they need a little help, you could look in a book or online.

### **On your Visit – now the fun really begins**

Don't forget to pick up your FREE SEA LIFE Factfinder Trail scratch cards. They are great fun and, who knows, they might just test your general knowledge, too.

"What Can You See?" – Don't be surprised if the pictures look very similar to those they drew before their visit – it's quite normal at this age. Either way, it's a great chance to reinforce the creatures' names and key features, and practice drawing skills.

### **After your Visit – cool, win tickets to come back**

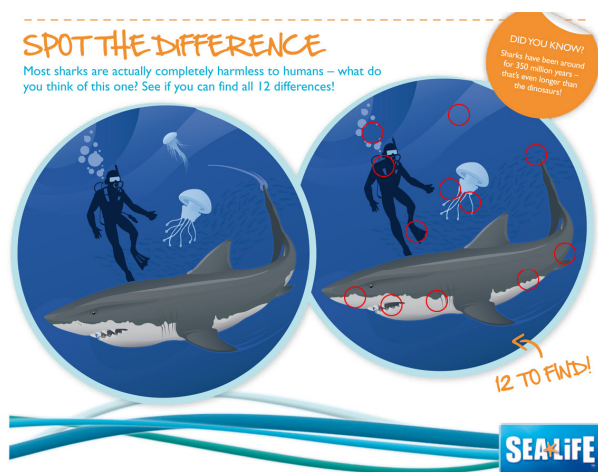
Now, let their imagination run wild as they create their very own Aquarium. Send it in and they could WIN a return visit to any one of our SEA LIFE centres for the whole family. Good luck!

## SEA LIFE centre Group Activity Park – 9 to 11 years

### Before your Visit – isn't it great looking forward to things

The Word Search and Spot the Difference puzzles really challenged the team here at Merlin Towers, but this age group should be able to show us how it's done. Add a big 'Well Done' from us if they manage to complete them without any help.

Don't let them peek, but here are the Spot the Difference answers:



To complete “What Will You See?” we suggest that you encourage the children to draw from memory. But if they need help, they could always get a little inspiration online.

### On your Visit – now the fun really begins

Don't forget to pick up your FREE SEA LIFE Factfinder Trail scratch cards. They are great fun and, who knows, they might just test your general knowledge, too.



“What Can You See?” – This age group will probably want to take their time drawing the actual creatures and it’s a good idea to ask the children what makes them so interesting. For more interaction, they could work in pairs or as group and maybe a few hints from you wouldn’t go amiss.

**After your Visit – cool, win tickets to come back**

Now, let their imagination run wild as they create their very own Aquarium. Send it in and they could WIN a return visit to any one of our SEA LIFE centres for the whole family. Good luck!





## **SEA LIFE centre Group Activity Park – 12 to 14 years**

### **Before your Visit – isn't it great looking forward to things**

SEA LIFE Mix 'n' Match is a fun challenge for this age group and they'll probably want to do some research online. They don't have to cut and stick, they could just write the answers in if it's easier. To help you guide and praise, here are the answers we were looking for (but don't let them peek):

#### **Clownfish**

Habitat: Warm waters of Indian and Pacific Oceans

Diet: Algae, plankton, molluscs, and crustaceans

Special Ability: Can develop immunity to the deadly poison of different sea anemone species.

#### **Black-Tip Shark**

Habitat: Coastal tropical and subtropical waters

Diet: Wide variety of fish including sardines, herring and anchovies

Special Ability: Can leap out of the water and spin three to four times before landing.

#### **Seahorse**

Habitat: Shallow tropical and temperate waters

Diet: Small shrimp, tiny fish and plankton

Special Ability: Can turn bright colours in unusual surroundings.

#### **Jellyfish**

Habitat: Anywhere from the surface down to the ocean depths

Diet: Zooplankton and smaller fish

Special Ability: All species can sting but some can kill.



## **Octopus**

Habitat: Diverse regions of the ocean, especially Coral Reef

Diet: Crabs and fish.

Special Ability: Most have no internal or external skeleton, allowing them to squeeze through tight places.

## **Rays**

Habitat: Sea floor; mostly in coastal water

Diet: Snails, clams, oysters and crustaceans

Special Ability: Some species can sting, leading to poisoning or even death.

SEA LIFE Creature Profiles 1 & 2 – these will pose an interesting challenge.

## **On your Visit – now the fun really begins**

Don't forget to pick up your FREE SEA LIFE Factfinder Trail scratch cards. They are great fun and, who knows, they might just test your general knowledge, too.

SEA LIFE Creature Profiles 1 & 2 – now it's time to check if the first answers are right and then fill in the answers to the questions in orange. A member of the SEA LIFE team will be happy to help if needed.

## **After your Visit – cool, win tickets to come back**

Now, let their imagination run wild as they design their very own sea creature. Send it in and they could WIN a return visit to any one of our SEA LIFE centres for the whole family. Good luck!



## **WDCS – Help us to STOP Commercial Whaling**

SEA LIFE is proud to support the efforts of the Whale and Dolphin Conservation Society. Take a look at the final sheet in your Activity Pack, and join us this July for a fun family five mile walk and help STOP commercial whaling.

Have a wonderful time and visit [www.groupfundays.co.uk](http://www.groupfundays.co.uk) again soon to plan your next amazing day out. Don't forget to sign up to receive regular news, offers & competitions from all of our attractions and you will automatically be entered in to a draw every month to win 10 FREE tickets to a Merlin Entertainments UK attraction of your choice.