

SEALIFETM

ACTIVITY PACK

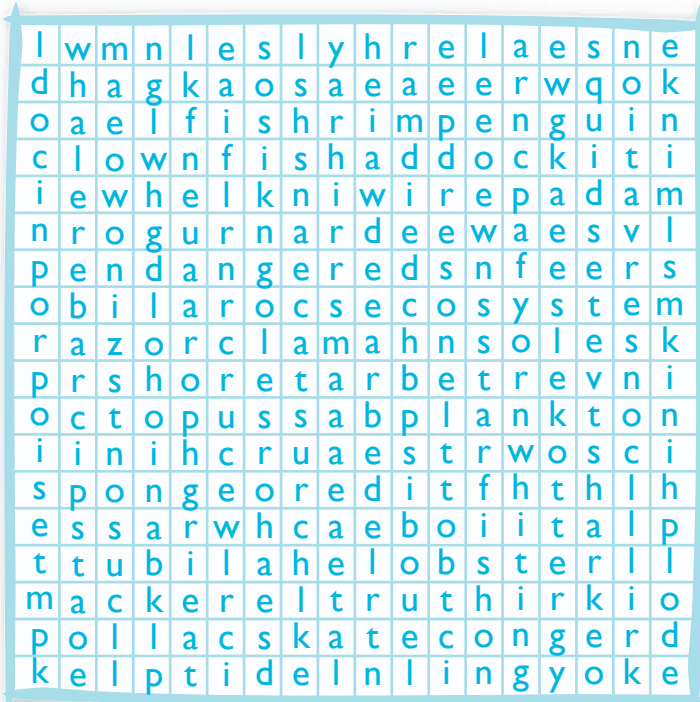
AGES
9-11



NAME _____

DATE _____

CENTRE VISITED _____



WORD SEARCH

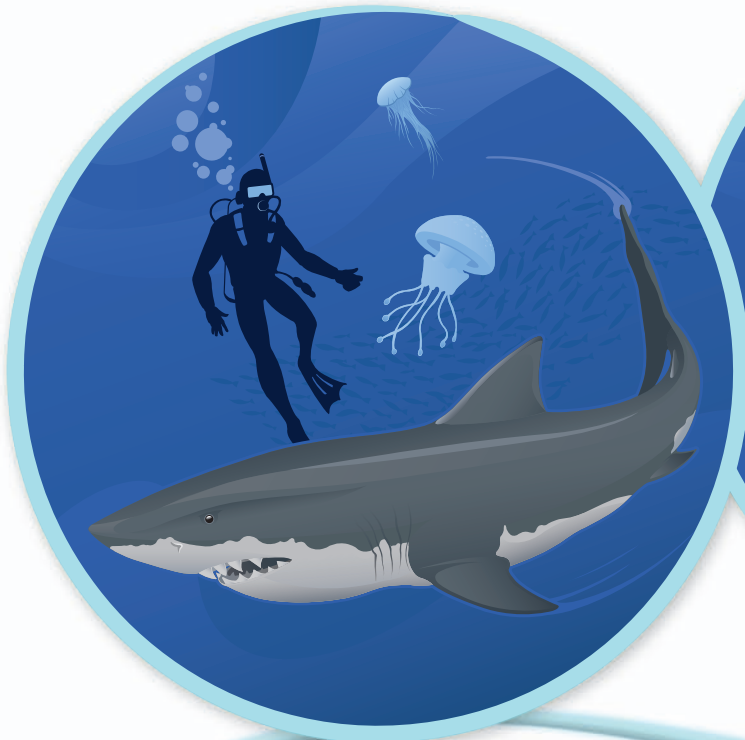
Wow! Did you know there were so many sea creatures? These are just a few, plus some other marine terms. See how many you can find.

Bass	Beach	Bottlenose	Clownfish
Cod	Conger	Conservation	Coral
Crab	Crustaceans	Dolphin	Ecosystem
Eel	Endangered	Fish	Gurnard
Haddock	Halibut	Invertebrate	Kelp
Krill	Ling	Lobster	Mackerel
Minke	Octopus	Otter	Penguin
Periwinkle	Plankton	Porpoise	Ray
Razorclam	Reef	Scallop	Sea urchin
Seahorse	Seal	Seaweed	Shark
Shore	Shrimp	Skate	Sole
Sponge	Squid	Starfish	Tide
Turtle	Whale	Whelk	Whiting
Wrasse			

SPOT THE DIFFERENCE

Most sharks are actually completely harmless to humans – what do you think of this one? See if you can find all 12 differences!

DID YOU KNOW?
Sharks have been around for 350 million years – that's even longer than the dinosaurs!



12 TO FIND!

BEFORE YOUR VISIT: WHAT WILL YOU SEE?

There's loads to see on your SEA LIFE centre visit. But how much do you already know? Draw what you think these creatures look like, and write something you know about them in the space provided. Don't look them up in a book or online – try and draw from memory!

Octopus

Octopuses have large brains and are thought to be as intelligent as dogs.

Shark

Black-Tip Reef Sharks are a type of shark found in very shallow waters which grow to nearly 2 metres.

Jellyfish

Box jellyfish are the most dangerous, and can kill a human in 3 to 4 minutes!

Clownfish

You'll recognise this fish from the popular animated film!

DID YOU KNOW?

Clownfish can develop resistance to the poison from anemones, and once immune they set up home under its protection

WHAT DO THEY LOOK LIKE?

ON YOUR VISIT: WHAT CAN YOU SEE?

Now you're at the SEA LIFE centre, compare your drawings with the creatures you can see, and draw them again as they really are. How close did you get? Use the space provided to write something you find interesting about each one.

DON'T MISS...

... the fun SEA LIFE **Factfinder Trail** scratch cards which you can pick up on your visit. See how many questions you get right!

Octopus are interesting because...

Sharks are interesting because...

DID YOU KNOW?

The longest Jellyfish in the world is the Arctic Lion's Mane Jellyfish, which grows to a huge 35m long!

SO? HOW CLOSE WERE YOU?

Jellyfish are interesting because...

Clownfish are interesting because...

SEA LIFE

DESIGN A SEA CREATURE

for your chance to WIN a SEA LIFE centre visit for your whole family!

Each SEA LIFE centre is different, so there's always something new to see and do. Win a visit for your whole family to the UK centre of your choice by entering our Design a Sea Creature competition.

To enter, design a brand new kind of creature based on everything you've seen at SEA LIFE, using your imagination to create the most amazing aquatic being you can think of.

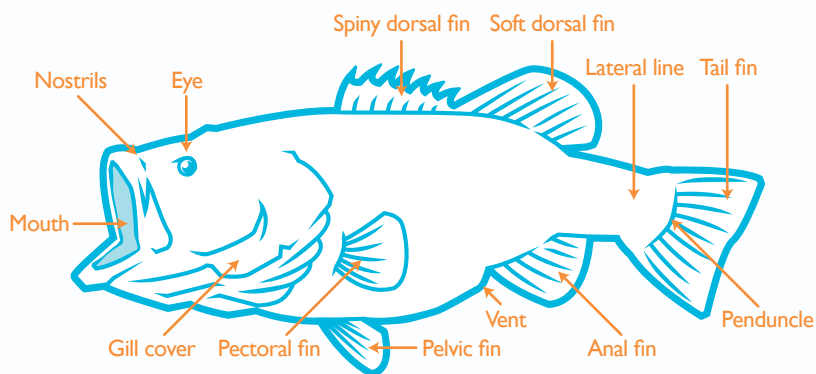
Things to consider...

- How a creature looks has a lot to do with where it lives – some shapes or colourations work better in some habitats than others
- Where does your creature live? Did its body shape or colour adapt because of this?
- How does your creature get its food? What does it eat? Is it carnivorous or herbivorous?

Draw your creature on a separate piece of paper, labelling it and adding any explanatory details you feel are appropriate. Then complete the form below and send it along with your entry to the following address:

SEA LIFE Groups Competition, Merlin Business Support, Units 5–6 Silverglade, Leatherhead Road, Chessington KT9 2QL

Think about the anatomy of your creature – for instance, this is the anatomy of a fish



COMPETITION ENTRY FORM

FIRST NAME

LAST NAME

AGE

ADDRESS

POSTCODE

PARENT/GUARDIAN NAME

PARENT/GUARDIAN DAYTIME TEL. NO

The Prize: One family ticket (up to a maximum of six tickets) to visit a UK SEA LIFE centre of your choice including the SEA LIFE London Aquarium. **Terms & Conditions:** Entries will be judged on a monthly basis. The winner will be chosen using an independent panel and their decision will be final. The winner will be notified by the fifth day of the month. The prize must be taken before end March 2011 and is subject to availability. The prize does not include transport or accommodation. Tickets can only be used as stipulated and cannot be exchanged for cash or used in conjunction with any other offer or promotion. Sale of the tickets for profit is prohibited. This competition is open to UK residents who have visited and completed the SEA LIFE centres Groups Activity Pack and a Parent/Guardian name and contact number has been supplied. It is not open to friends, family or contracted suppliers of Merlin Entertainments Group and can be closed or changed at any time. For a list of winners please visit www.groupfundays.co.uk or send a stamped addressed envelope to: SEA LIFE Groups Competition, Merlin Entertainments, Units 5/6 Silverglade, Leatherhead Road, Chessington KT9 2QL.

SEA LIFE

As well as helping millions to discover the marvels of the marine world, the SEA LIFE network plays an important role in helping safeguard our seas and their inhabitants for the future. SEA LIFE regularly contributes to conservation and marine animal welfare, and this includes working with the WDCS (Whale & Dolphin Conservation Society).



WDCS - we do a lot, so here's the quick guide

Established in 1987, the WDCS is the world's most active charity dedicated to the conservation and welfare of all whales, dolphins and porpoises (also known as cetaceans). We are a global voice for the protection of these animals and their environment.

What does that mean?

Unfortunately whales, dolphins and porpoises face many threats, such as:

- hunting
- collisions with ships
- not having enough food
- climate change
- captivity
- being caught in fishing nets and drowning
- chemical and noise pollution

We defend these remarkable creatures from such threats by taking the money and resources raised by supporters, and pumping it back into campaigns and projects across the globe that really do have an impact...

WDCS campaigns locally and internationally to stop these many threats and create pressure to bring about positive change.

WDCS funds various projects around the world that support urgent practical conservation work.

WDCS supports governments and other decision-making organisations who want to protect whales and dolphins and their environment. We help them by providing sound advice, expert opinion, together with strong legal, scientific and ethical arguments.

WDCS fights the governments and businesses which don't care about whales and dolphins, and those that support or run activities that harm these wonderful animals. We work tirelessly to expose them by running vital investigations that reveal these unnecessary actions and help stop them.

WDCS represents whales and dolphins on important issues and threats by advising and engaging with international conventions, national governments, local communities and other conservation organisations.

WDCS educates and informs people through the media, events, exhibitions, schools initiatives, visitor centres, websites and much more. By spreading the word we improve understanding of whales and dolphins and the need to protect these incredible animals and their environment.



This July, join WDCS and all UK SEA LIFE centres for a fun family five mile walk and help stop commercial whaling. To find out more, visit www.walkforwhales.org

Contact us to learn more about WDCS and other ways to get involved
Via email info@wdcs.org or online www.wdcs.org

WDCS Reg. Charity No. 1014705

